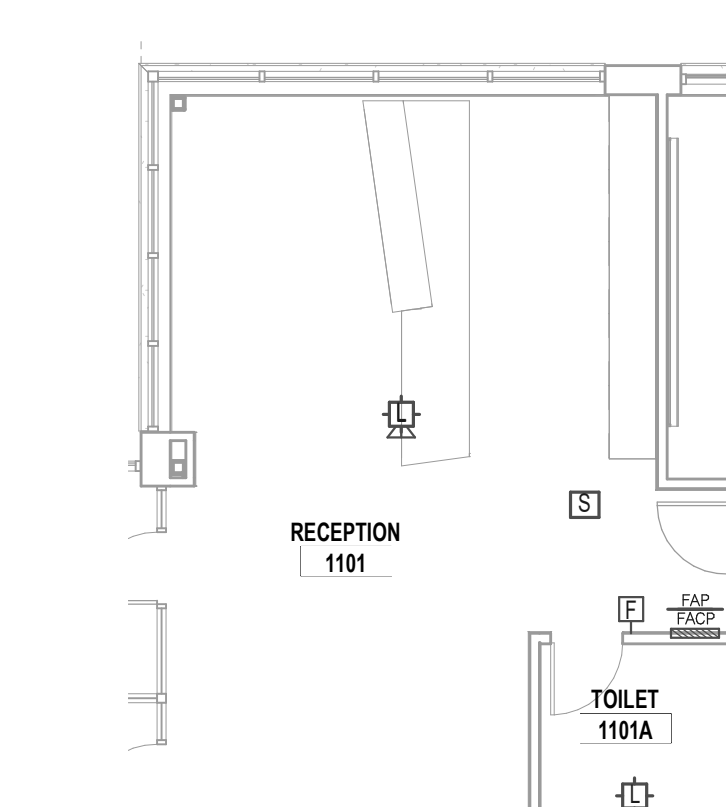


FIRE ALARM GENERAL NOTES

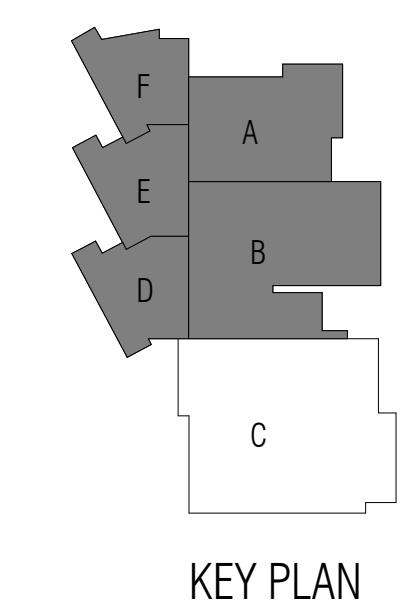
- SEE SHEET FA7.11 FOR GENERAL NOTES APPLICABLE TO THE ENTIRE DRAWING SET.

FIRE ALARM PLAN NOTES

- PROVIDE FIRE ALARM CONTROL MODULES FOR ELEVATOR PRIMARY RECALL, SECONDARY RECALL, FIREFIGHTER WARNING AND POWER SHUNT-TRIP FUNCTION.

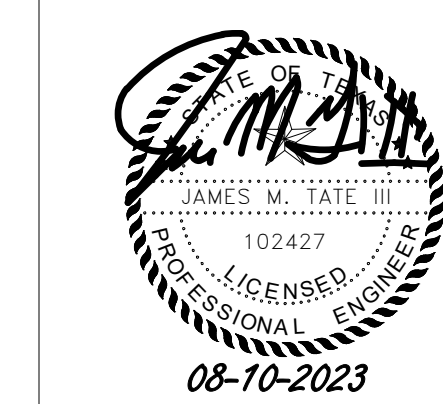


2 FIRE ALARM FLOOR PLAN - LEVEL ONE - UNIT A - FACP LOCATION
 1/8" = 1'-0"



KEY PLAN

1 FIRE ALARM FLOOR PLAN - LEVEL ONE - UNIT A
 1/16" = 1'-0"



ISSUED: August 11, 2023

REVISIONS	
Revision No.	Revision Date

Director: QS
 Approver: QS
 Designer: QS
 Proj. Arch.: QS
 Drawn By: TMW
 Quality Control: QS

PROJECT NO.

22-064.00

SHEET TITLE

FIRE ALARM FLOOR PLAN - LEVEL ONE - UNIT A

SHEET NO.

FA2.11A

EMA Engineering & Consulting, Inc.
 Tyler | Austin | Houston | El Paso
 DFW | San Antonio | Shreveport
 Texas Firm Registration No. F-893
 Louisiana Firm Registration No. EF-5818
 www.EMAengineer.com

DESIGN SOLVE ENHANCE

SUBMISSION OF BID WILL BE CONSIDERED ACKNOWLEDGMENT THAT THE CONTRACTOR HAS VISITED THE SITE AND HAS VERIFIED ALL EXISTING JOB CONDITIONS AND INCLUDED ANY NECESSARY MODIFICATION TO EXISTING AND NEW WORK REQUIRED FOR INSTALLATION OF A COMPLETE AND WORKING SYSTEM.

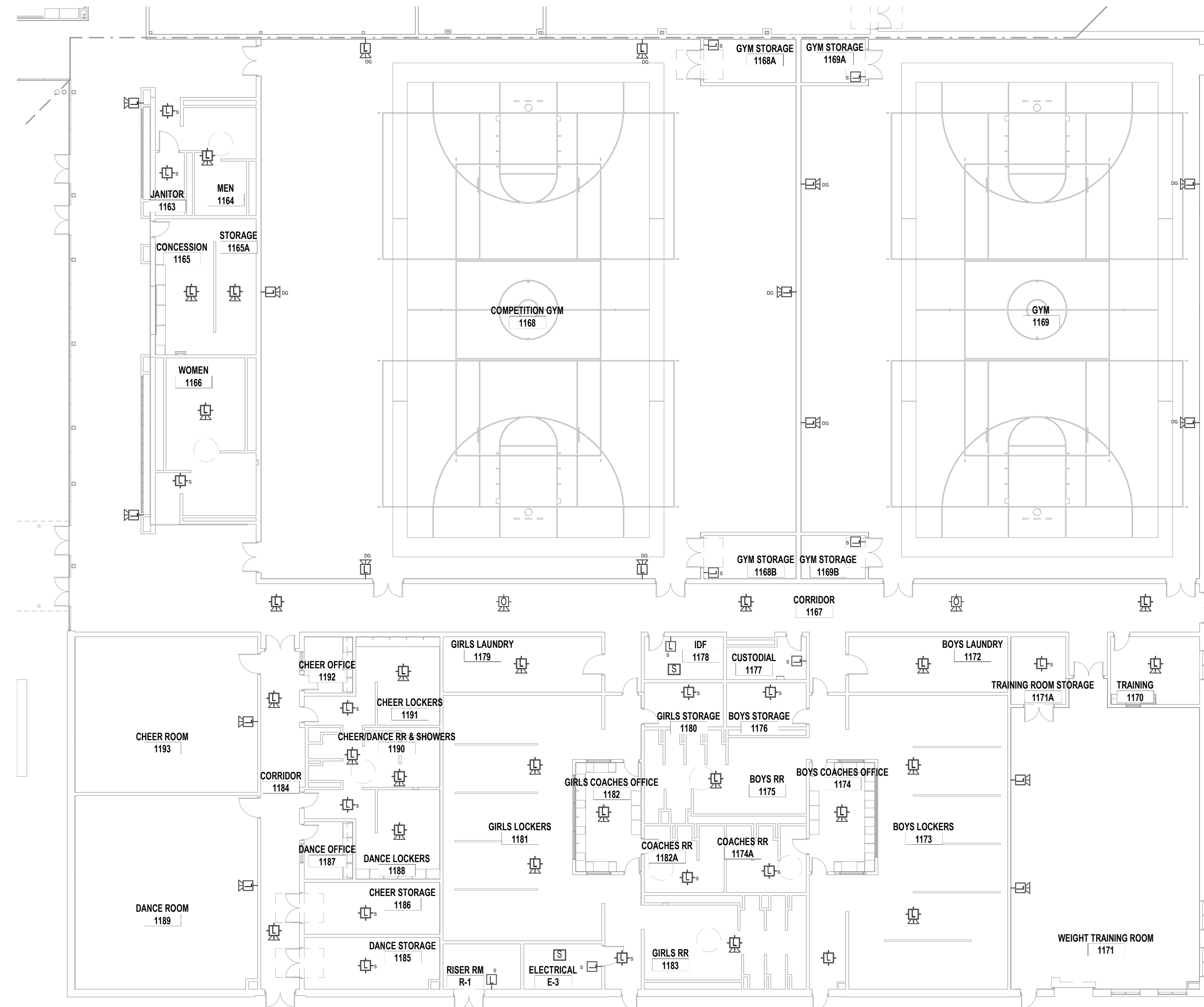
FIRE ALARM GENERAL NOTES

- SEE SHEET FA7.11 FOR GENERAL NOTES APPLICABLE TO THE ENTIRE DRAWING SET.

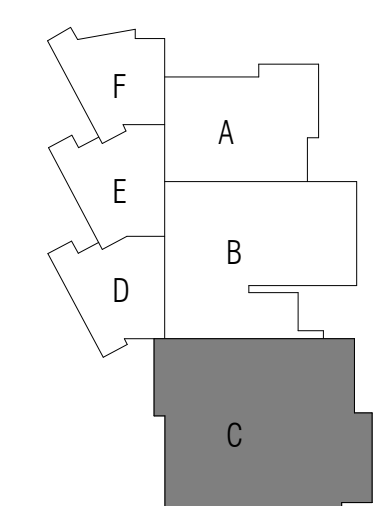
ARCHITECT

VLK Architects, Inc.
 20445 State Hwy 249, Suite 350
 Houston, Texas 77070
 Main Phone: 281.671.2300
 www.vlkarchitects.com

WILLIS ISD
 WILLIS, TEXAS



1 FIRE ALARM FLOOR PLAN - LEVEL ONE - UNIT B
 1/16" = 1'-0"



KEY PLAN



ISSUED: August 11, 2023

REVISIONS

Revision No. Revision Date

Director: Drawn By: TMW
 Approver: Designer: Quality Control
 Designer: Proj. Arch.: QS
 QS

PROJECT NO.

22-064.00

SHEET TITLE

FIRE ALARM FLOOR PLAN -
 LEVEL ONE - UNIT B

SHEET NO.

FA2.11B

COPYRIGHT © 2023 VLK ARCHITECTS

EMA EMA Engineering & Consulting, Inc.
 Tyler | Austin | Houston | El Paso
 DFW | San Antonio | Shreveport
 Texas Firm Registration No. F-893
 Louisiana Firm Registration No. EF-5818
 www.EMAengineer.com

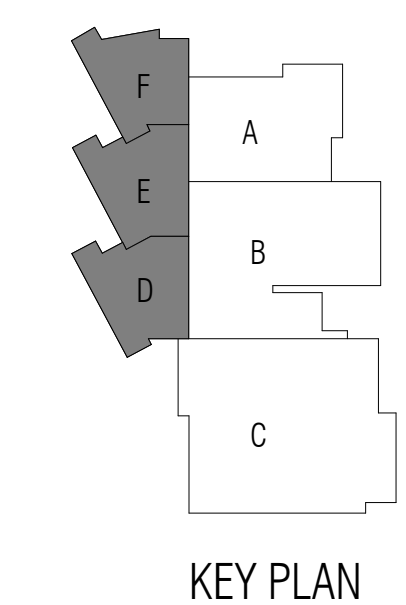
DESIGN SOLVE ENHANCE

SUBMISSION OF BID WILL BE CONSIDERED ACKNOWLEDGMENT THAT THE CONTRACTOR HAS VISITED THE SITE AND HAS VERIFIED ALL EXISTING JOB CONDITIONS AND INCLUDED ANY NECESSARY MODIFICATION TO EXISTING AND NEW WORK REQUIRED FOR INSTALLATION OF A COMPLETE AND WORKING SYSTEM.

Middle School No. 3

FIRE ALARM GENERAL NOTES

- SEE SHEET FA7.11 FOR GENERAL NOTES APPLICABLE TO THE ENTIRE DRAWING SET.



KEY PLAN

1 FIRE ALARM FLOOR PLAN - LEVEL TWO - UNIT D
1/16" = 1'-0"



ARCHITECT
VLK Architects, Inc.
 20445 State Hwy 249, Suite 350
 Houston, Texas 77070
 Main Phone: 281.671.2300
 www.vlkarchitects.com

WILLIS ISD
 WILLIS, TEXAS



ISSUED: August 11, 2023

REVISIONS

Revision No.	Revision Date

Director
 Approver
 Designer
 Designer
 Proj. Arch.
 QS

Drawn By
 TMW
 Quality Control
 Designer
 QS

PROJECT NO.

22-064.00

SHEET TITLE

FIRE ALARM FLOOR PLAN -
 LEVEL TWO - OVERALL

SHEET NO.

FA2.12A

COPYRIGHT © 2023 VLK ARCHITECTS

EMA EMA Engineering & Consulting, Inc.
 Tyler | Austin | Houston | El Paso
 DFW | San Antonio | Shreveport
 Texas Firm Registration No. F-893
 Louisiana Firm Registration No. EF-5818
 www.EMAengineer.com

DESIGN SOLVE ENHANCE

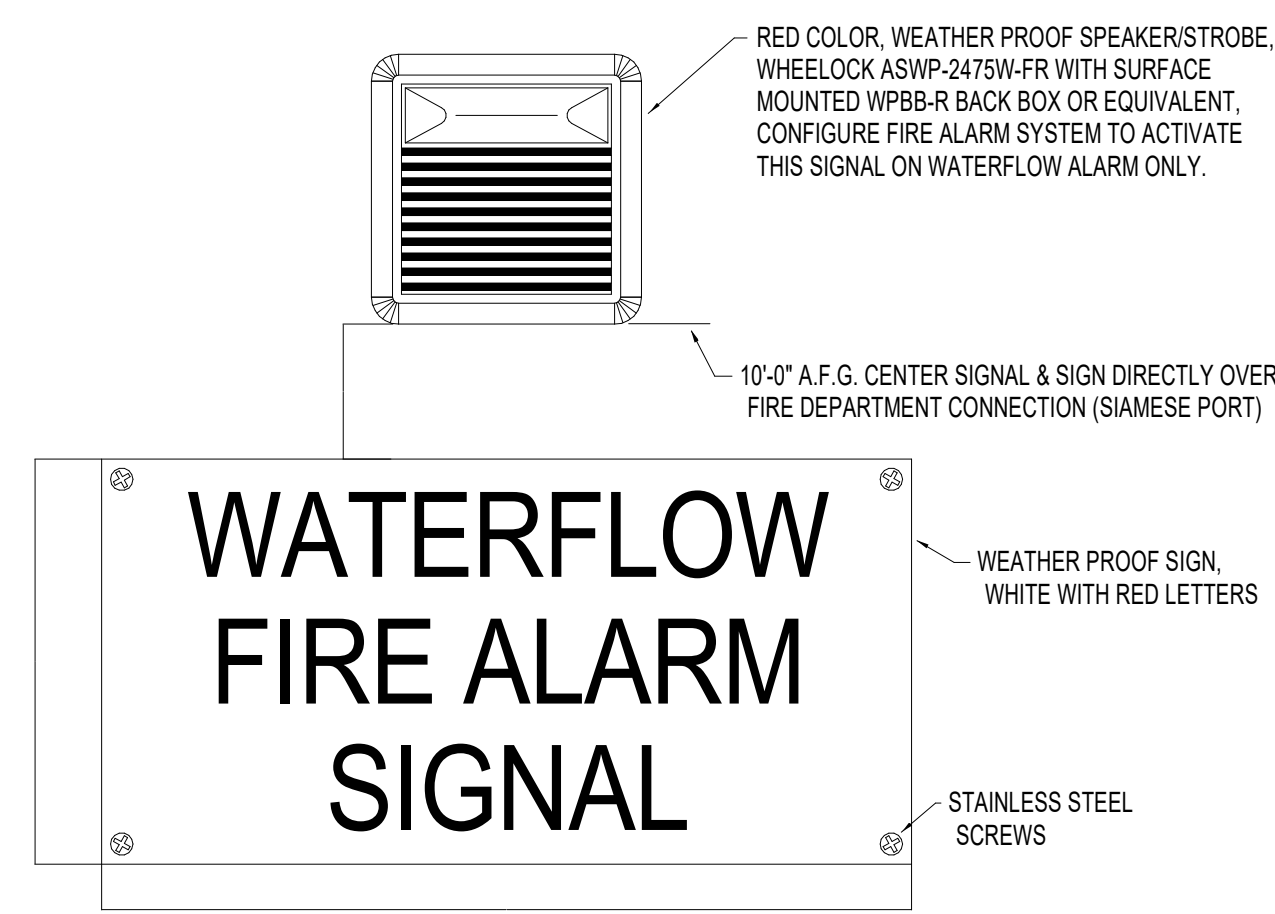
SUBMISSION OF BID WILL BE CONSIDERED ACKNOWLEDGMENT THAT THE CONTRACTOR HAS VISITED THE SITE AND HAS VERIFIED ALL EXISTING JOB CONDITIONS AND INCLUDED ANY NECESSARY MODIFICATION TO EXISTING AND NEW WORK REQUIRED FOR INSTALLATION OF A COMPLETE AND WORKING SYSTEM.

Middle School No. 3

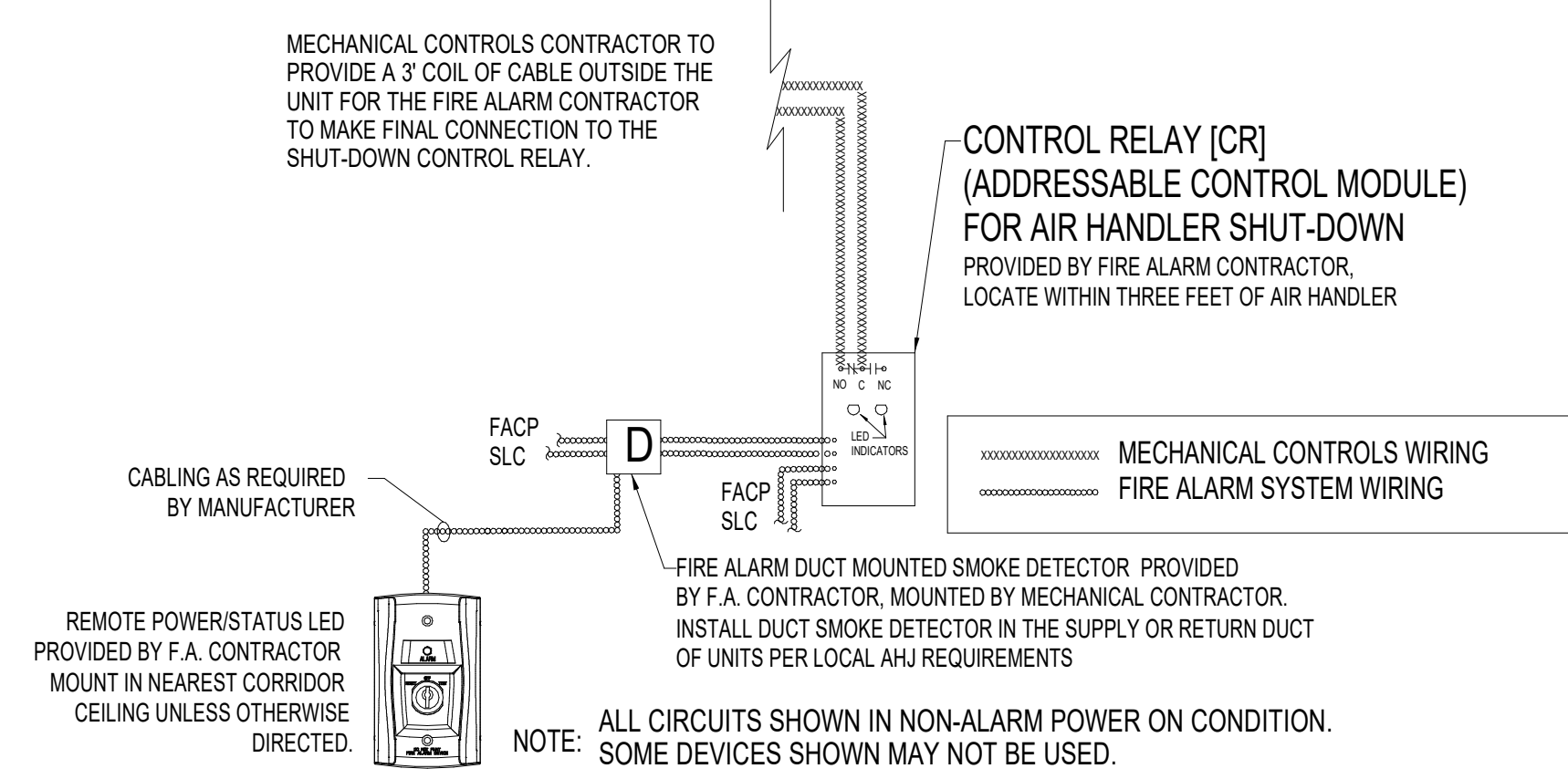
FIRE ALARM SYMBOLS

-(F)	FIRE ALARM MANUAL PULL STATION - WALL MOUNTED DEVICE BACKBOX 44" A.F.F.
-(L)	FIRE ALARM HORN/STROBE - WALL MOUNTED 80"A.F.F., EXTERIOR TO BE WEATHERPROOF, WALL MOUNTED 10'-0" A.F.F.G.
-(L)bg	FIRE ALARM HORN/STROBE WITH DEVICE GUARD - WALL MOUNTED 80"A.F.F.,
-(L)wf	FIRE ALARM HORN/STROBE WATERFLOW ALARM - WEATHERPROOF, WALL MOUNTED 10'-0" A.F.F. ABOVE SIAMESE PORT
-(L)ls	FIRE ALARM STROBE - WALL MOUNTED DEVICE, BACKBOX 80" A.F.F.
-(L)lf	FIRE ALARM STROBE LOW FREQUENCY - WALL MOUNTED DEVICE, BACKBOX 80" A.F.F.
-(L)	FIRE ALARM CEILING MOUNTED HORN/STROBE
-(L)s	FIRE ALARM CEILING MOUNTED STROBE
-(L)l	FIRE ALARM SPEAKER/STROBE - WALL MOUNTED 80"A.F.F., EXTERIOR TO BE WEATHERPROOF, WALL MOUNTED 10'-0" A.F.F.G.
-(L)lbg	FIRE ALARM SPEAKER/STROBE WITH DEVICE GUARD - WALL MOUNTED 80"A.F.F.
-(L)lwf	FIRE ALARM SPEAKER/STROBE WATERFLOW ALARM - WEATHERPROOF, WALL MOUNTED 10'-0" A.F.F. ABOVE SIAMESE PORT
-(L)l	FIRE ALARM CEILING MOUNTED SPEAKER/STROBE
-(L)lpc	FIRE ALARM CEILING MOUNTED SPEAKER ONLY WITH 6.5" TO 8" HIGH WATTAGE DRIVER CONE
-(S)	FIRE ALARM SMOKE DETECTOR - CEILING MOUNTED
-(S)co	FIRE ALARM CARBON MONOXIDE ALARM UNIT - CEILING MOUNTED
-(S)cb	FIRE ALARM COMBINATION SMOKE/CARBON MONOXIDE DETECTOR - CEILING MOUNTED
-(S)sb	FIRE ALARM SMOKE DETECTOR WITH SOUNDER BASE - CEILING MOUNTED
-(H)	FIRE ALARM HEAT (THERMAL) DETECTOR - CEILING MOUNTED
-(D)	FIRE ALARM DUCT MOUNTED SMOKE DETECTOR WITH CONTROL RELAY - COORDINATE WITH DIVISION 23
-(CR)	FIRE ALARM CONTROL RELAY (ADDRESSIBLE CONTROL MODULE)
-(BD)	FIRE ALARM BEAM DETECTOR - MOUNT AS HIGH AS POSSIBLE FOR BEAM CENTERLINE 19" FROM OBSTRUCTIONS
-(E)	FIRE ALARM TO SMOKE/FIRE BARRIER DOOR ELECTROMAGNETIC HOLDER/RELEASE INTERFACE
-(S)FAC	FIRE ALARM TO SPRINKLER RISER TAMPER SWITCH AND WATERFLOW SWITCH INTERFACES - COORDINATE WITH DIVISION 21
-(VH)	FIRE ALARM TO VENT HOOD FIRE SUPPRESSION SYSTEM INTERFACE - COORDINATE WITH DIVISION 11
-(FACP)	FIRE ALARM CONTROL PANEL
-(FABA)	FIRE ALARM REMOTE ANNUNCIATOR PANEL
-(FAP)	FIRE ALARM PLAN (FRAMED GRAPHIC, NO ELECTRICAL OR ELECTRONIC CONNECTION)
-(LOC)	FIRE ALARM LOCAL OPERATORS CONSOLE
-(MM)	FIRE ALARM MONITOR MODULE

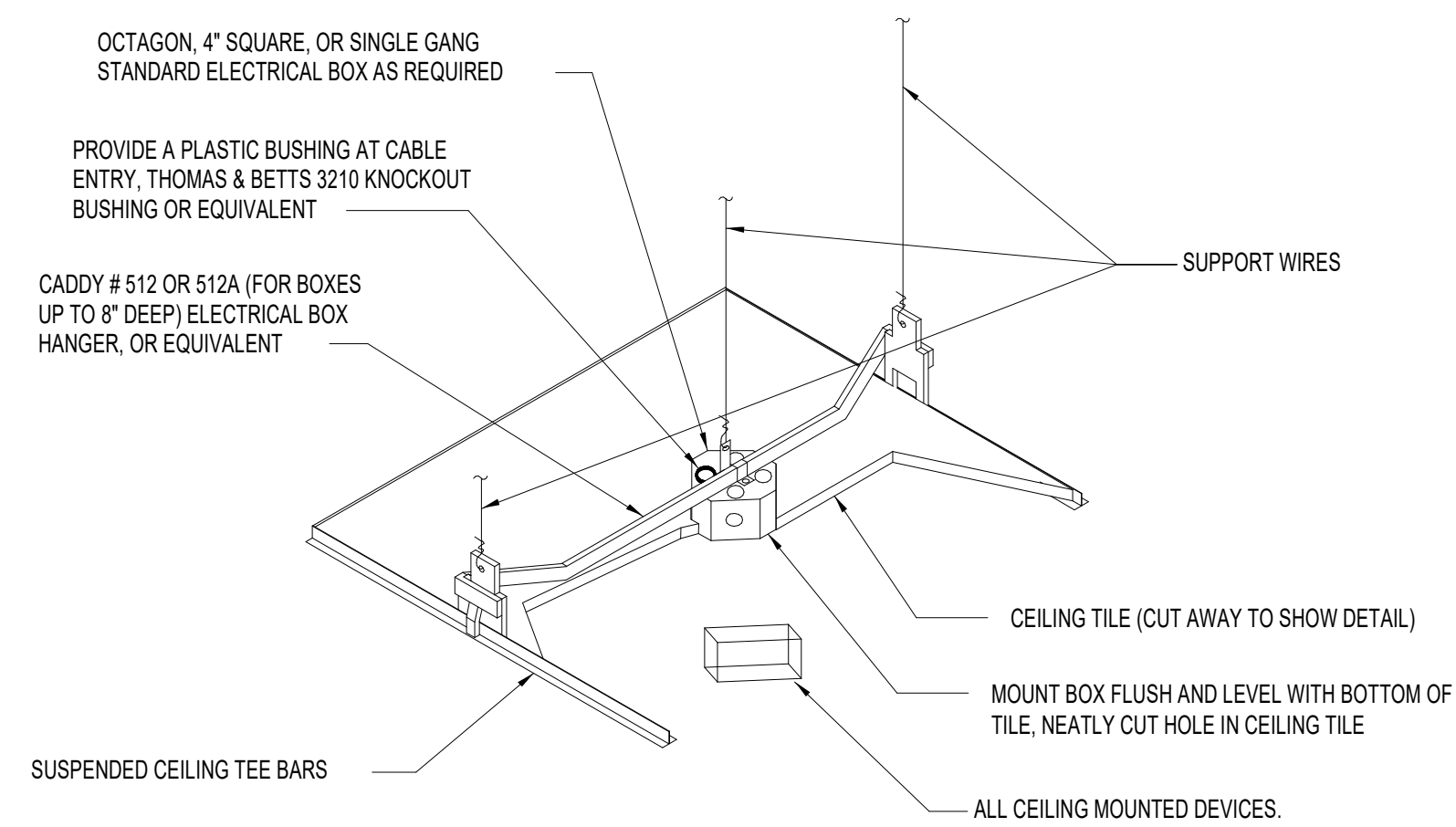
NOTES: 1. SOME SYMBOLS MAY NOT BE USED.
2. ACCESSIBLE DEVICES HIGHEST OPERABLE PART TO BE 48" MAXIMUM/18" MINIMUM A.F.F. - REFER TO ARCHITECTURAL DRAWINGS.
3. DIMENSIONS GIVEN A.F.F. ARE TO BOTTOM OF BOX.



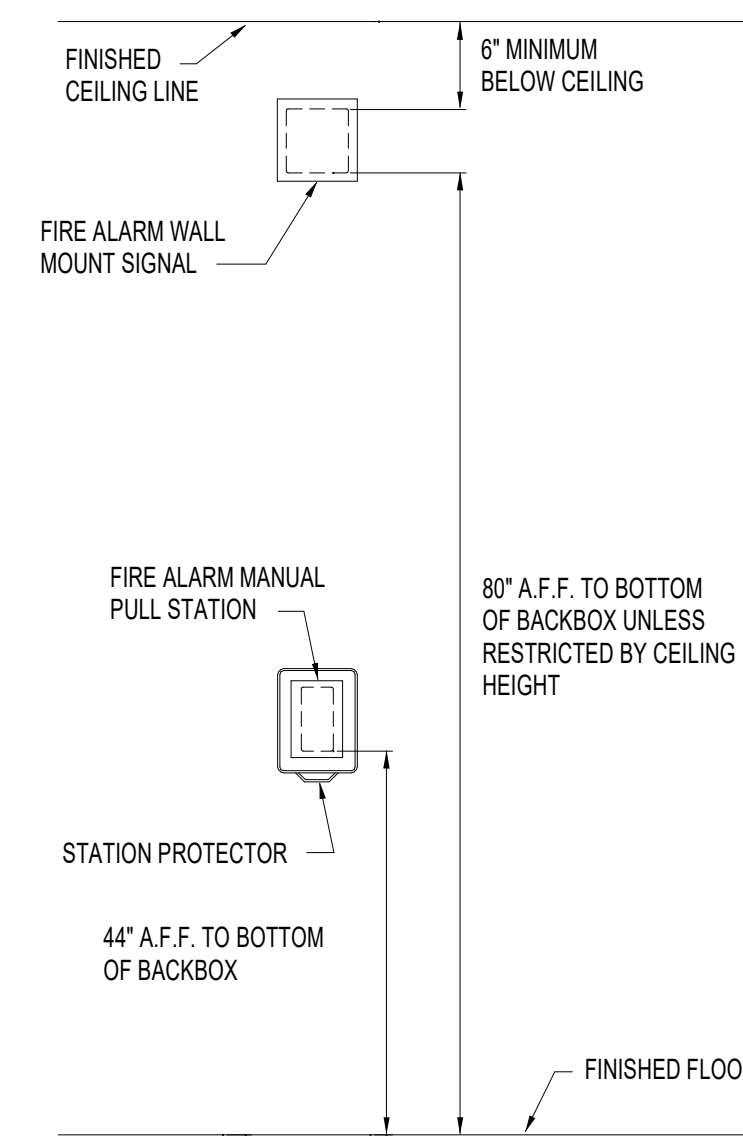
1 EXTERIOR WATERFLOW FIRE ALARM SIGNAL
N.T.S.



2 TYPICAL AIR HANDLER
FIRE SAFETY CONTROL FUNCTION CIRCUIT WIRING DIAGRAM
N.T.S.



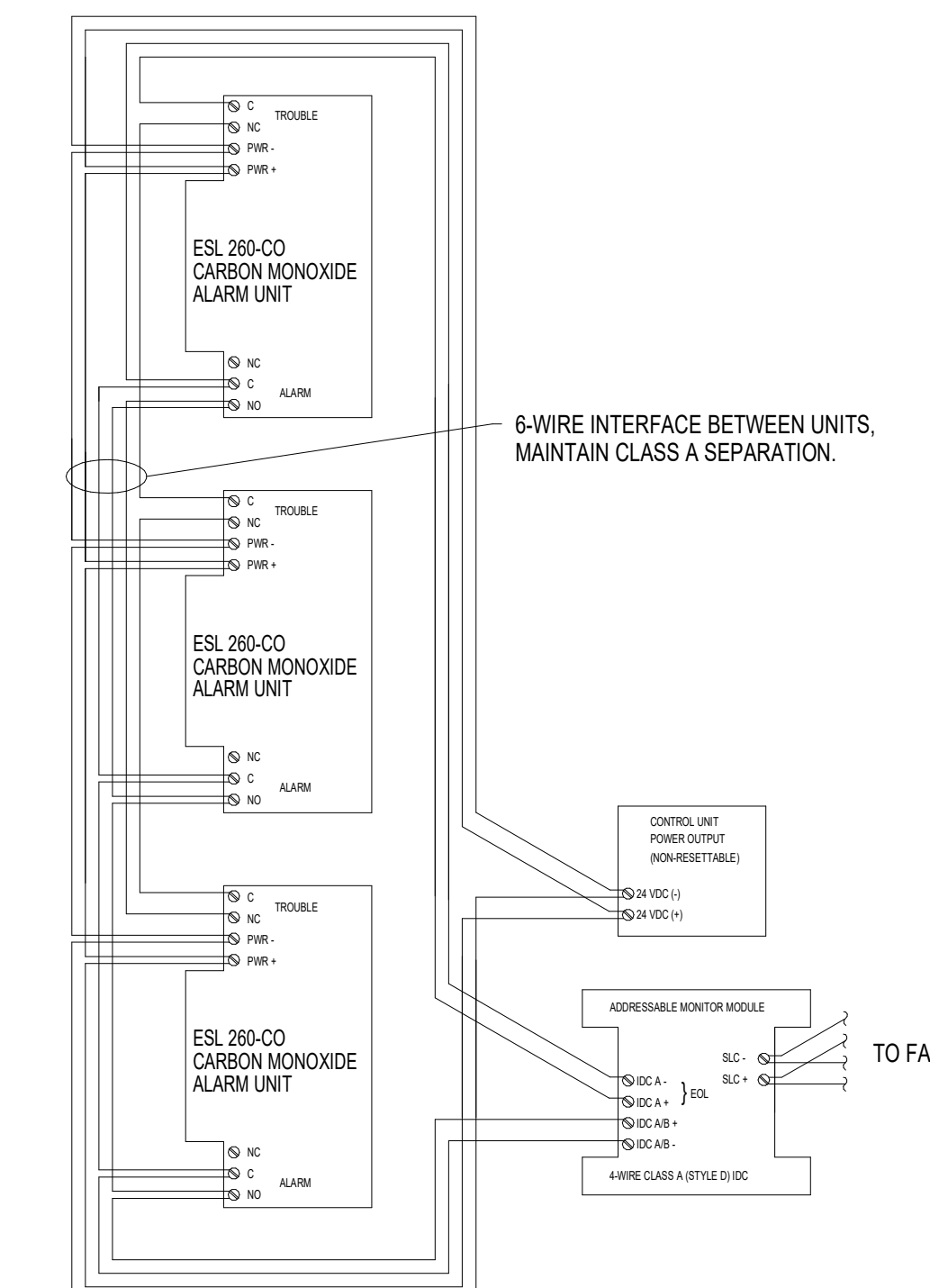
3 HANGER BAR DETAIL FOR ALL DROP CEILING MOUNTED DEVICES
N.T.S.



4 FIRE ALARM DEVICE BACKBOXES
N.T.S.

FIRE ALARM GENERAL NOTES

- ELECTRICAL CONTRACTOR SHALL PROVIDE ALL CONDUIT AND STANDARD BACKBOXES FOR SYSTEMS SHOWN ON THIS DRAWING IN BASE PROPOSAL.
- IN ANY EXPOSED CEILING AREAS ALL LOW VOLTAGE CABLING SHALL BE ENCLOSED IN CONDUIT.
- ALL FIRE ALARM CABLING SHALL RUN DOWN THE CORRIDORS AND BRANCH OFF TO EACH ROOM TRUNKING SHALL BE RUN PRIMARILY PERPENDICULAR TO BUILDING WALLS.
- WHERE NO FINISHED CEILINGS ARE SCHEDULED ALL DEVICES, CONDUIT, AND BACKBOXES SHALL BE INSTALLED UP AGAINST BOTTOM OF DECK AND SHALL NOT PROTRUDE BELOW BOTTOM OF STEEL. THE ARCHITECT SHALL APPROVE ROUTING OF ALL EXPOSED ROUGH-INS PRIOR TO PLACEMENT.
- ANY SIGNAL, OUTLET OR OTHER DEVICE MOUNTED ON A COLUMN, PILASTER, OR SIMILAR WALL OFFSET AREA SHALL BE CENTERED.
- VERIFY MARKERBOARD, TACKBOARD, AND DOOR SWING LOCATIONS WITH ARCHITECTURAL PLANS - DO NOT INSTALL DEVICES IN THESE AREAS.
- COORDINATE EXACT MECHANICAL EQUIPMENT LOCATION AND TYPE WITH MECHANICAL PLANS AND MECHANICAL CONTRACTOR. DO NOT INSTALL CONDUIT WITHIN 3'-0" OF ANY HVAC UNIT UNLESS THE DEVICE SERVES THAT UNIT.
- FIRE ALARM CONTRACTOR SHALL PROVIDE DUCT MOUNTED SMOKE DETECTORS AND CONTROL RELAYS WHERE REQUIRED. MECHANICAL CONTRACTOR SHALL INSTALL HOUSING AND SAMPLE TUBES IN DUCT. FIRE ALARM CONTRACTOR TO PROVIDE LOW VOLTAGE CONNECTION TO FIRE ALARM.
- FIRE ALARM CONTRACTOR SHALL VERIFY CIRCUIT STYLE, QUANTITY, AND LOCATION OF DEVICES TO MEET ALL APPLICABLE CODES, LAWS, AND ALL REQUIREMENTS OF THE LOCAL AUTHORITY HAVING JURISDICTION FOR INCLUSION IN BASE PROPOSAL.
- REFER TO SPECIFICATION DIVISION 28 FOR ADDITIONAL INFORMATION.



5 CARBON MONOXIDE ALARM UNIT ZONE WIRING DIAGRAM
N.T.S.



ISSUED: August 11, 2023

REVISIONS

Revision No.	Revision Date

Director
Approvers
Designer
Proj. Arch.
QS

Drawn By
TMW
Quality Control

PROJECT NO.

22-064.00

SHEET TITLE

FIRE ALARM DETAILS AND SYMBOLS

SHEET NO.

FA7.11